

HOME NETWORK CONNECTION

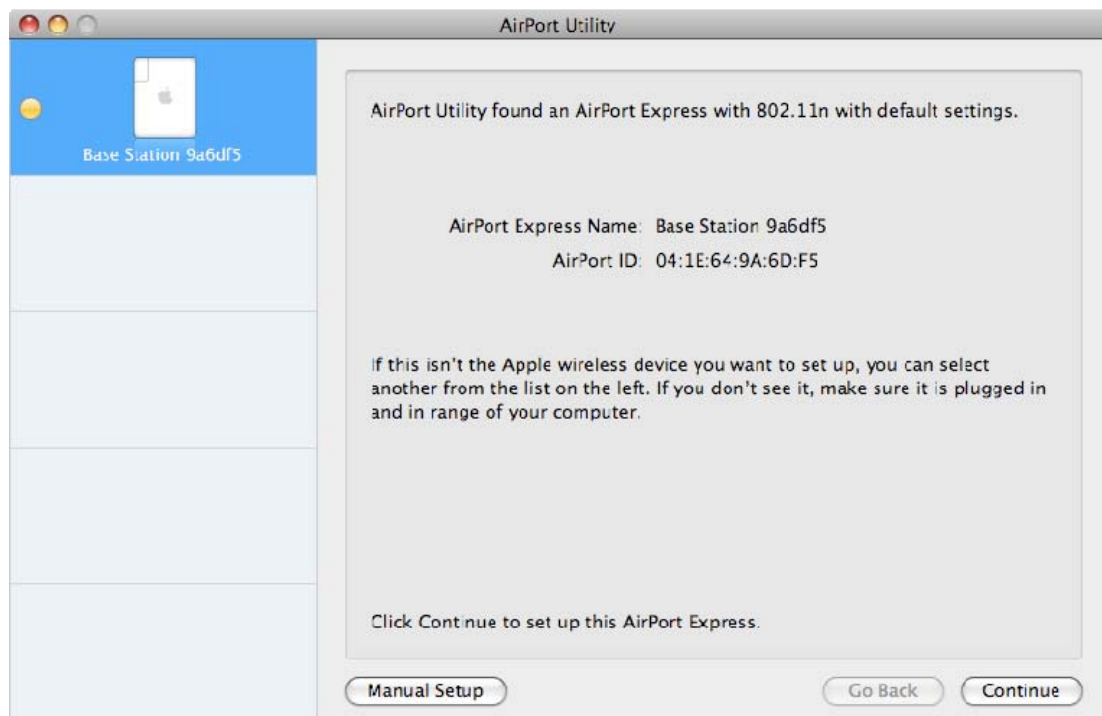
In order to be able to listen to your music while surfing on the web, you must connect your WM10 to your existing home wireless network. Here is an example on how to set up such a connection.

Your computer must have been already configured to connect to your wireless home network and your WM10 should be ready to be configured (led blinking red).

Launch the AirPort Utility. If you do not own it, [click here](#) to download it.

You should see the device you want to connect on the left column with default name Base Station XXXXXX and a small orange circle near it.

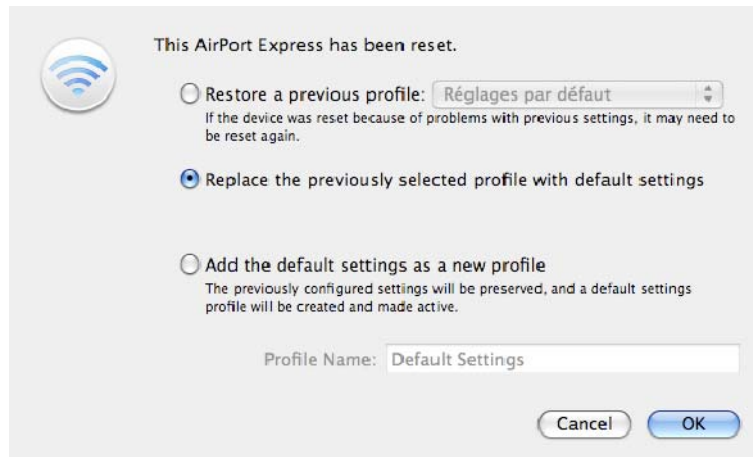
Select it and choose “Manual Setup” at the bottom left.



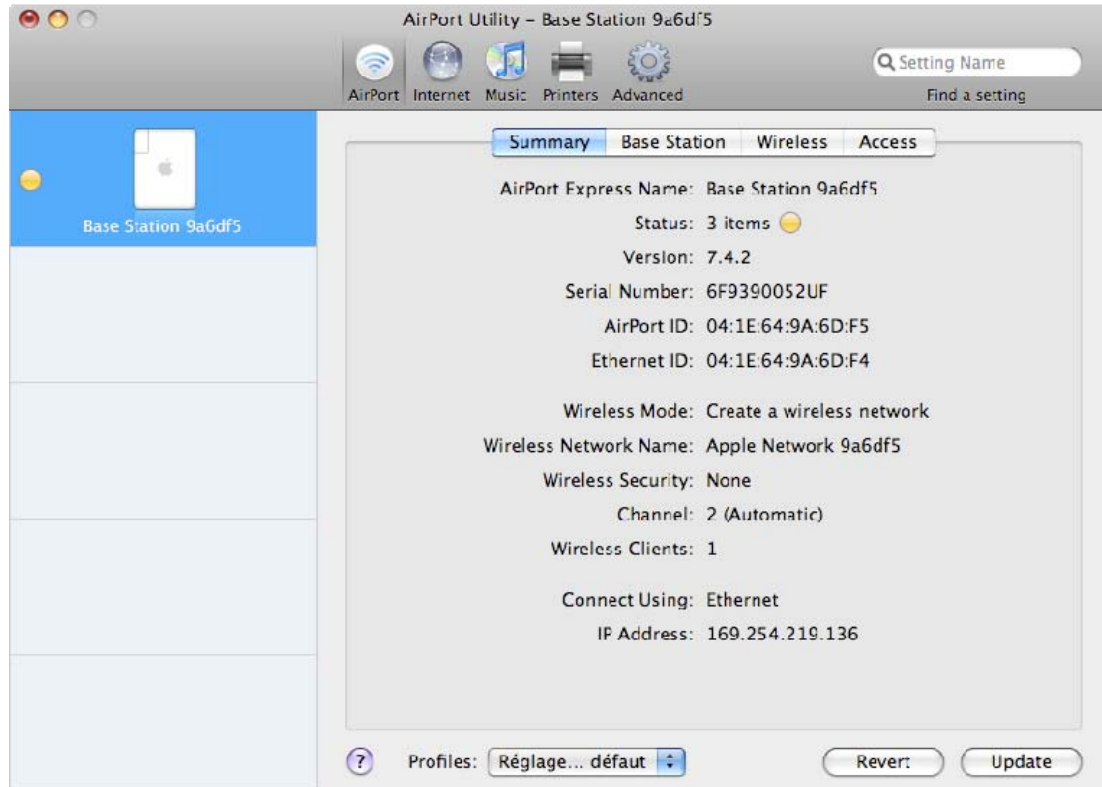


To the prompt « Are you sure you want to switch wireless networks? » Choose “Switch”.

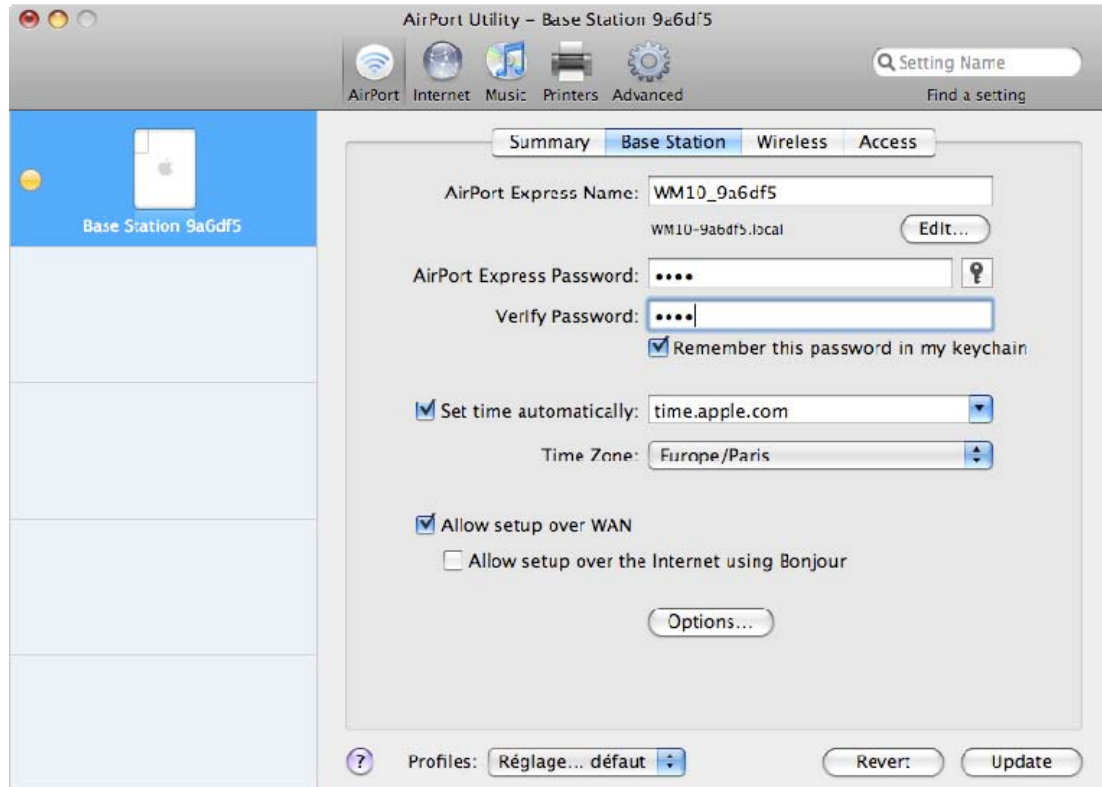
At the following screen, click « OK ».



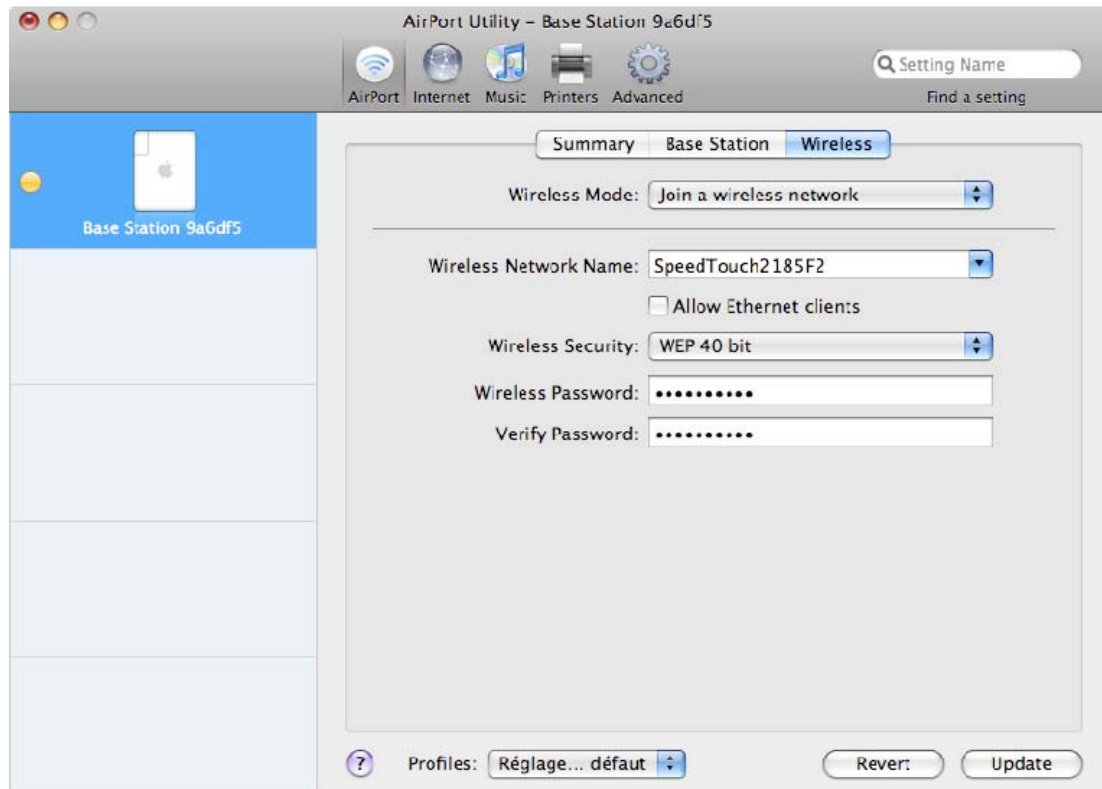
Then you get this sum up screen with the default parameters that were reloaded.



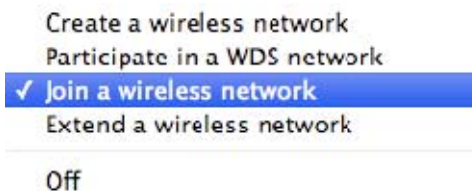
Select the « Base Station » tab and indicate the name WM10_XXXXXX and the desired password. Keep the other settings as in the picture below.



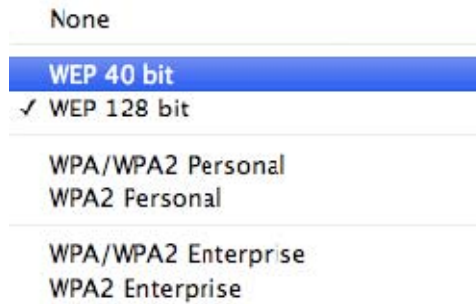
Then select « Wireless » tab.



At « Wireless Mode » section, select « Join a wireless network »

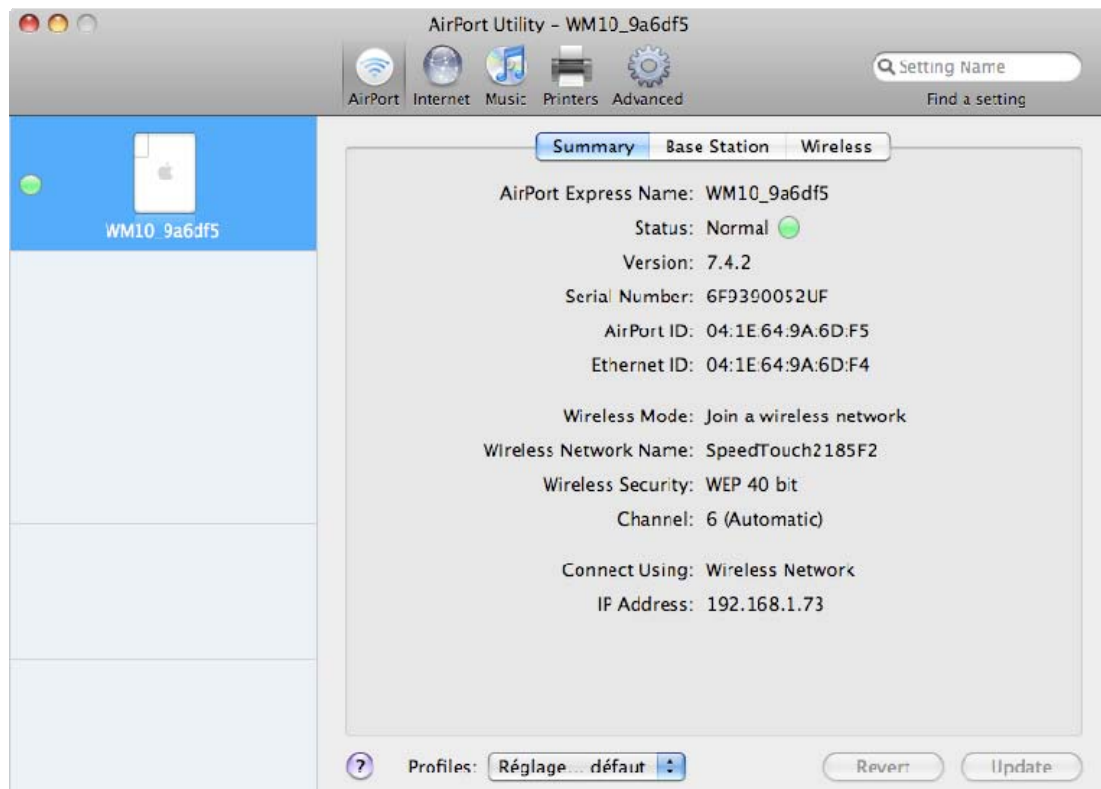


At section « Wireless Network Name », select your modem/box name. Then put the parameter corresponding to your wireless security setting in the choicelist « Wireless Security » and enter your network password.



Once all parameters are entered, click on « Update ».

Wait during the update process. When WM10 restart, the following screen should appear:



Close the Utility and start iTunes.

While connected to your network, you should see your WM10 in the speaker choice list.