

## WM10 - DEFAULT SETTING

If you have reset your WM-10, you must configure it again to ensure correct system functioning.

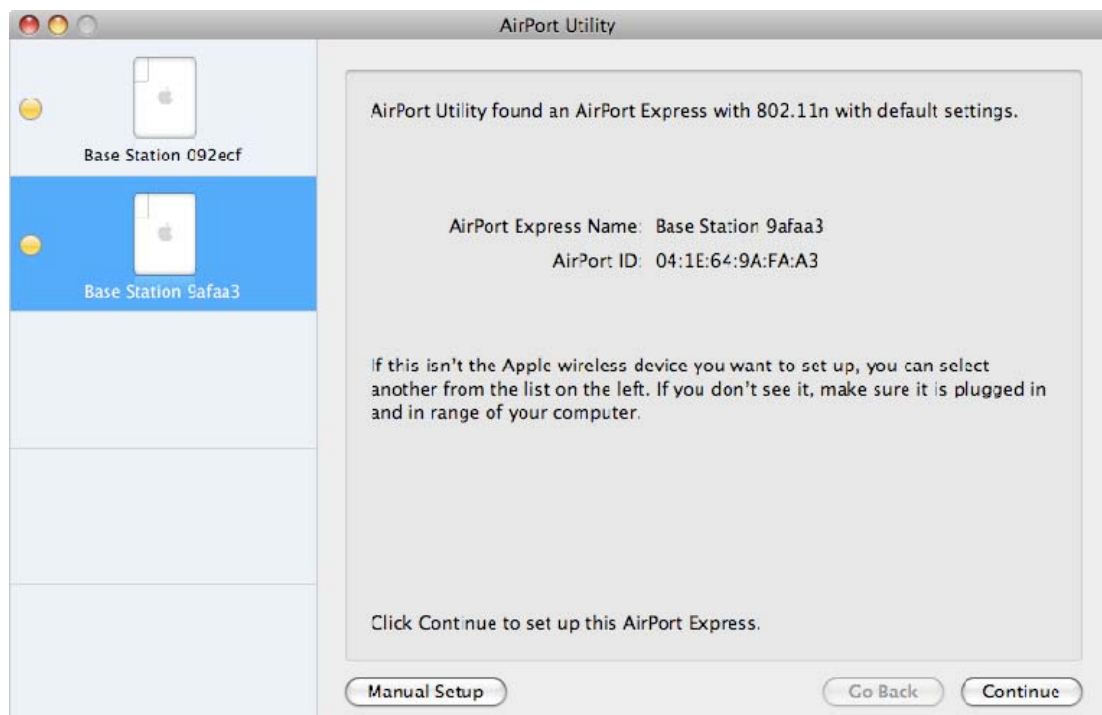
The procedure consists of designating a name for it and recreating the wireless network it will link up to.

Once you have reset the device, wait for the LED to flash, indicating that the device is ready to be configured.

Run the AirPort utility software. If you do not own it, [click here](#) to download it.

On a Mac : Finder -> Applications -> Utilities -> Airport Utility.

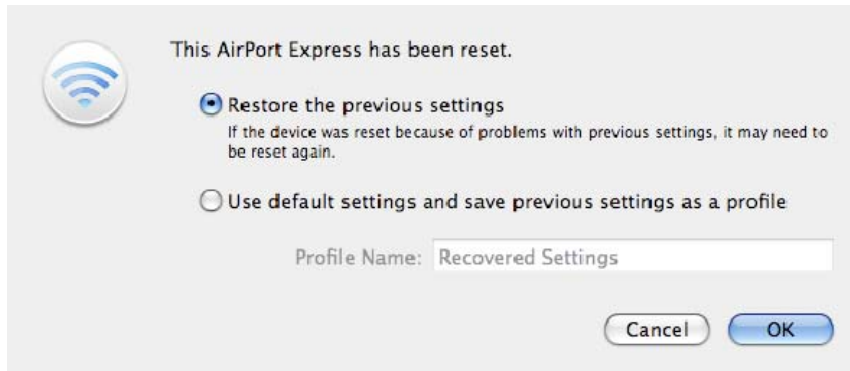
On a PC: Start → All Programs ->Airport → Airport Utility.



You should see your device in the right hand column using a name in the format: Base Station XXXXXX. Select it and click “Continue”.

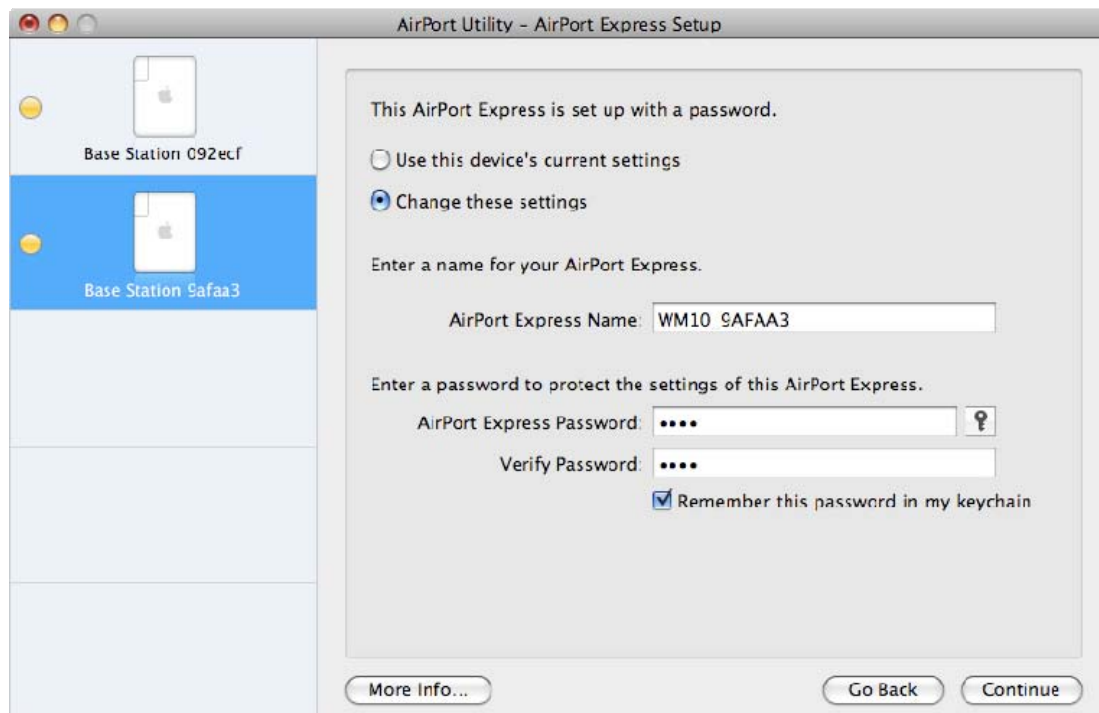
A new window is displayed requiring you to select the type of parameters you wish to set. If you would like to retrieve the previous parameters, select option 1 for the default settings.

Click “OK”.



After this, a series of windows will open, enabling you to enter your settings.

Select "Modify these settings". Enter the name you wish to attribute to the WM-10.

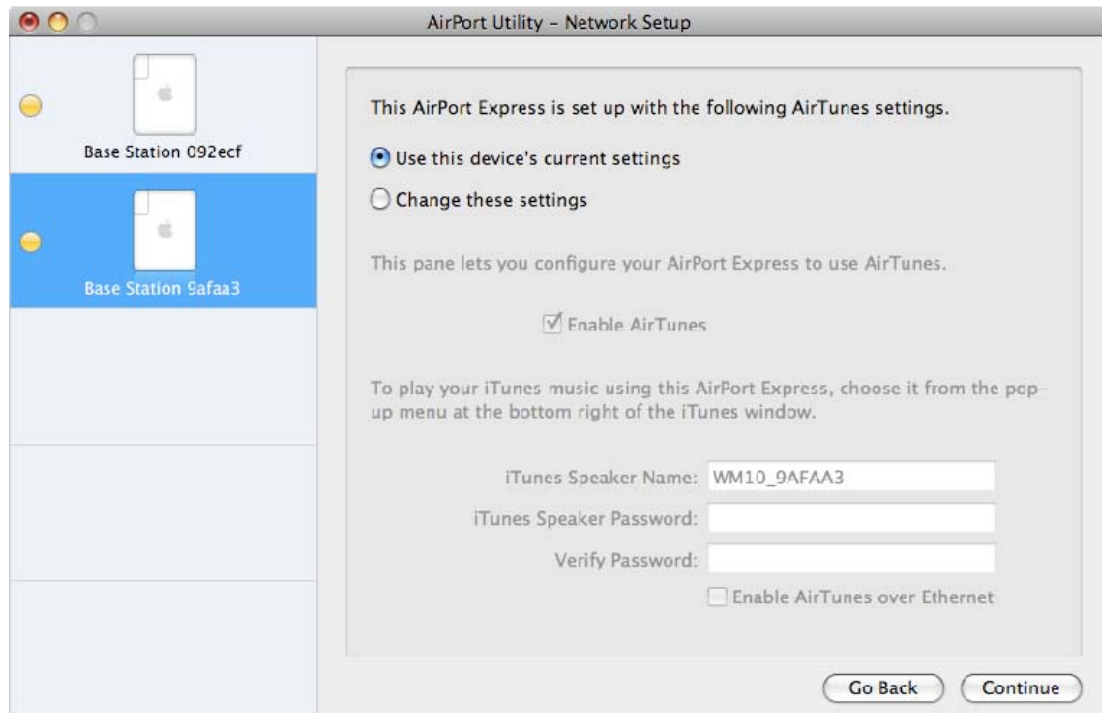


We recommend that you choose a name according to the format: NAMECHOICE\_XXXXXX, where XXXXXX represents the number of your WM-10, already detected and displayed in the right hand column of the utility software. In this way it is easier to distinguish between several devices. Choose whether or not to associate a password.

Click « Continue ».

The following window opens.

Ensure that « Enable AirTunes » is checked. The name of the WM-10 is displayed again.



Click « Continue ».

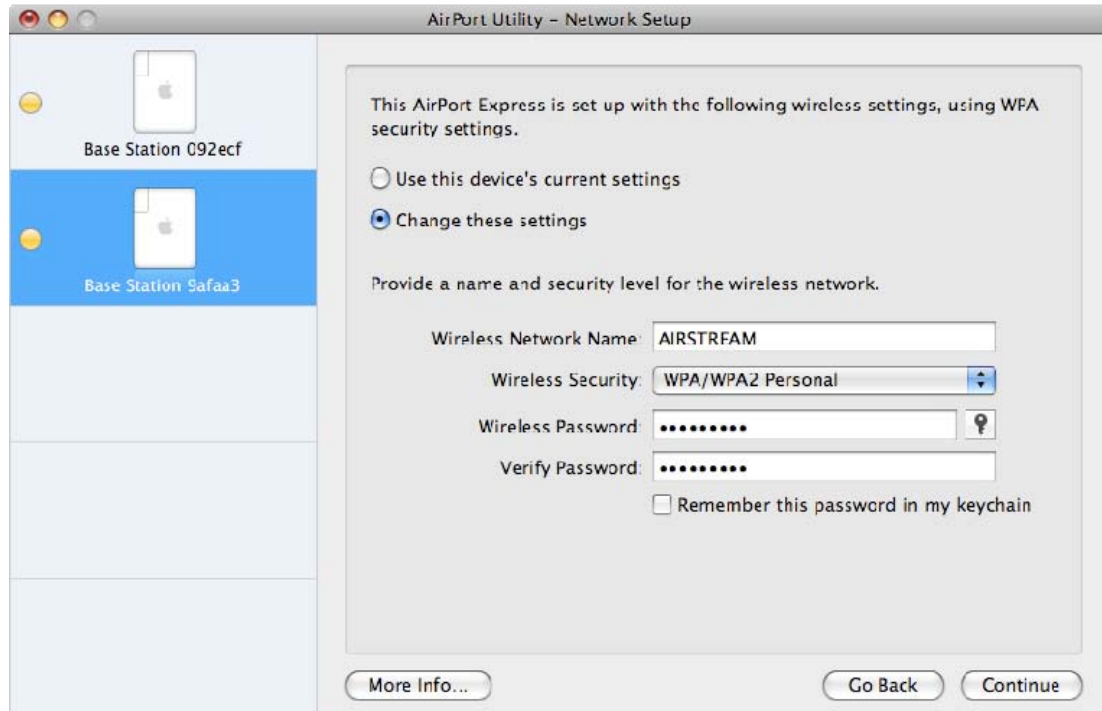
The next window to appear is the Network Settings window.

To create a network between your computer and the WM-10, select the option « Create a wireless network ». We will continue with this configuration. To connect to an existing network, refer to the other documentation available on the website.

Click « Continue ».

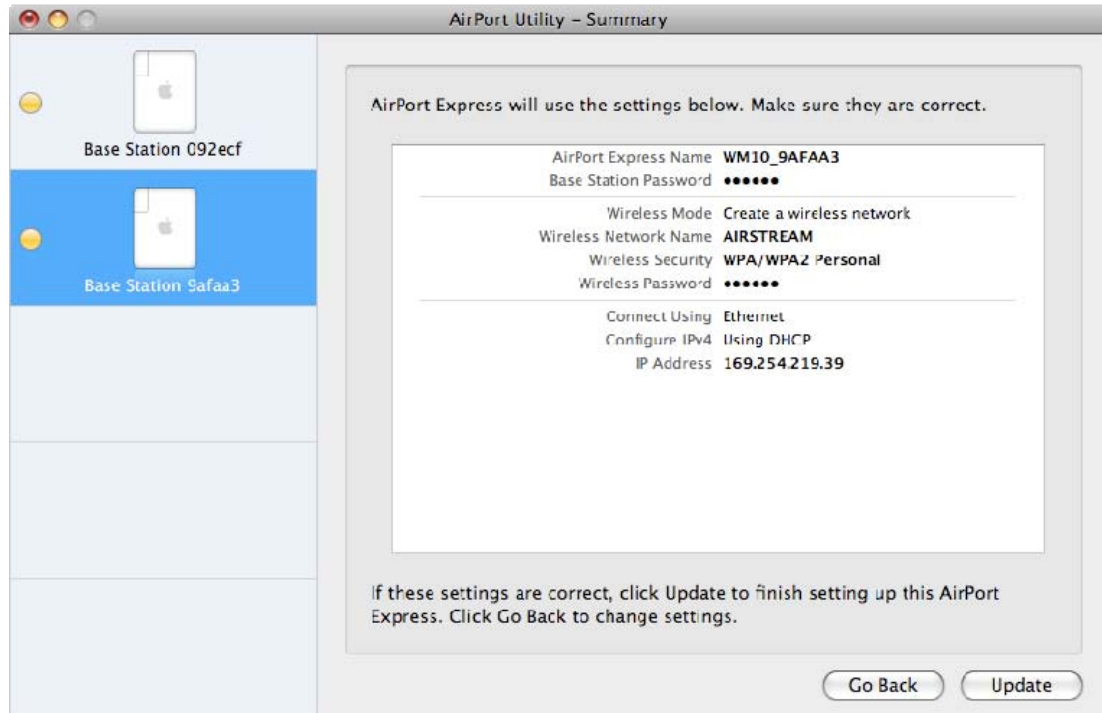
On the following page you must enter the name of the network and the password for wireless access.

By default, the name of the network is AIRSTREAM and the password is “airstream”. You may enter another name and/or password.



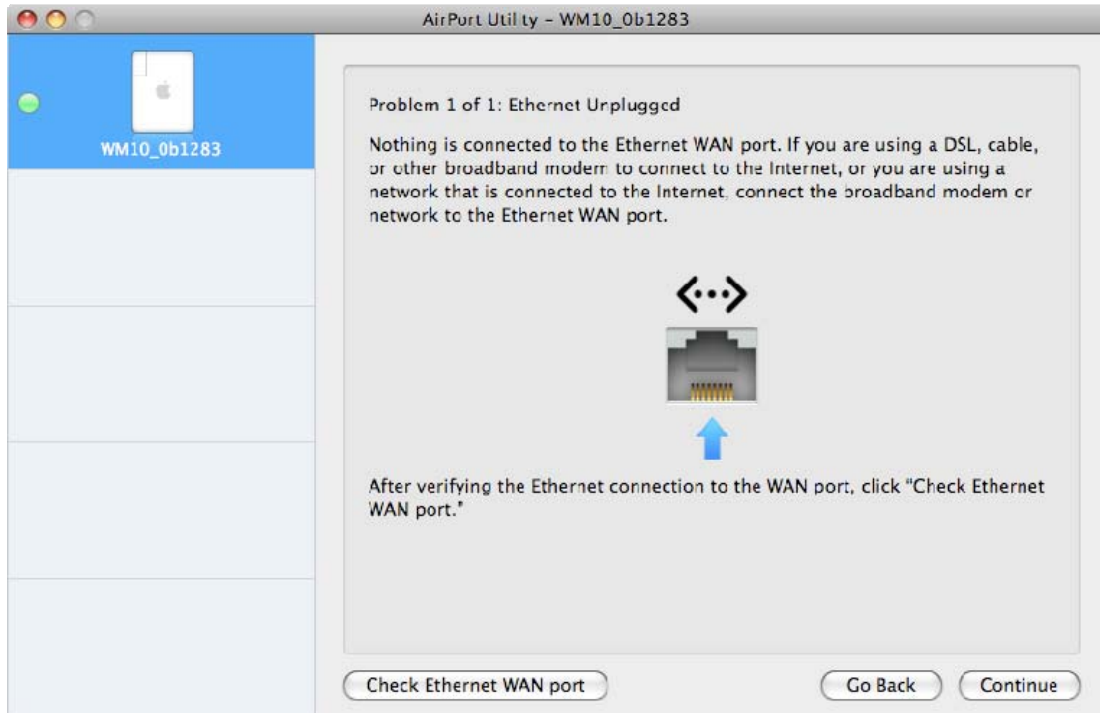
Click « Continue ».

A window reminding you of the choices you have made is displayed.

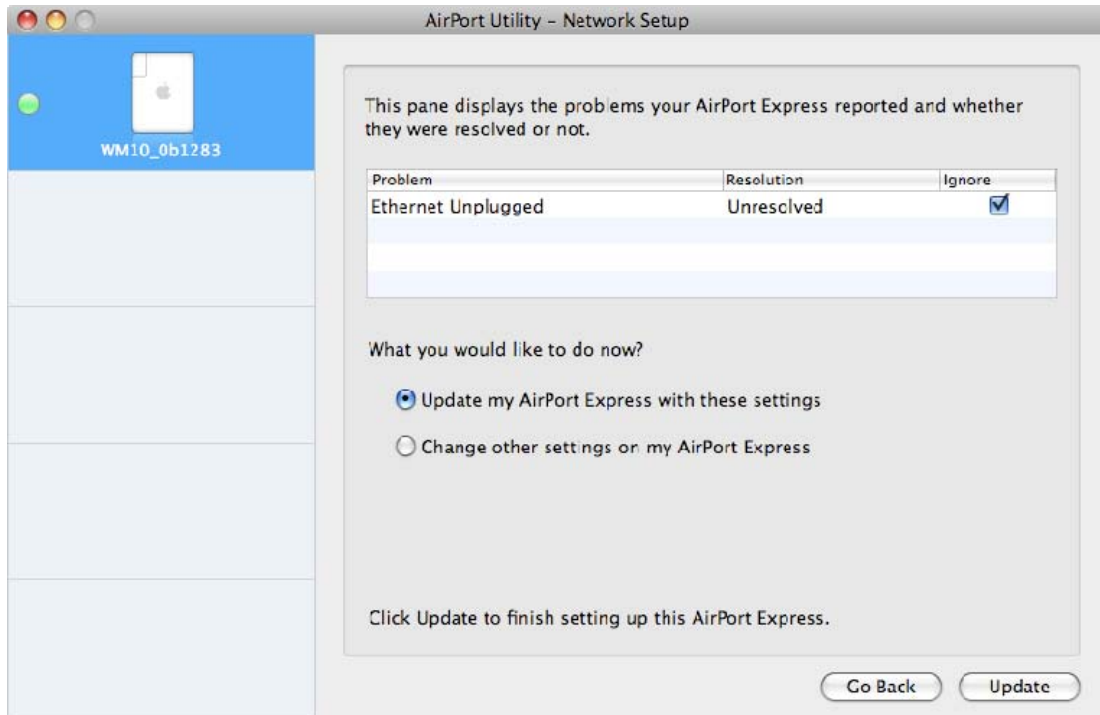


If all of the entries are correct, validate them by clicking Update. The operation may take a few minutes and your WM-10 will re-boot.

A message « Ethernet Unplugged » may appear. Click « Continue », then « Ignore ».



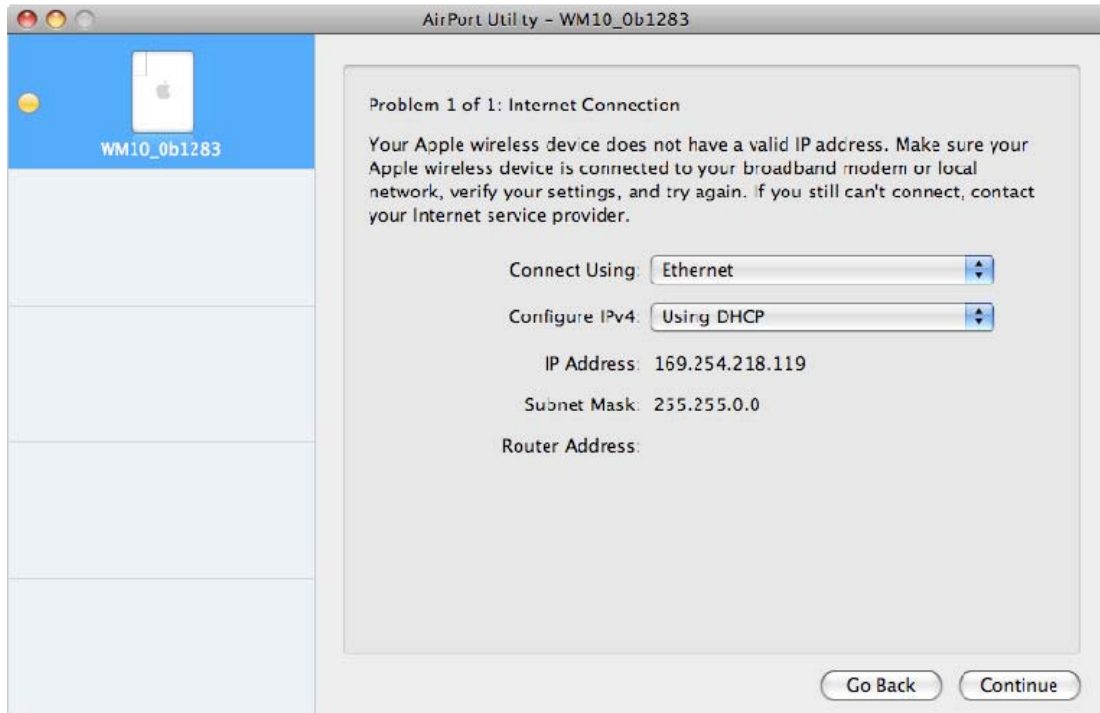
A window providing information about the problem is displayed. Select « Update ».



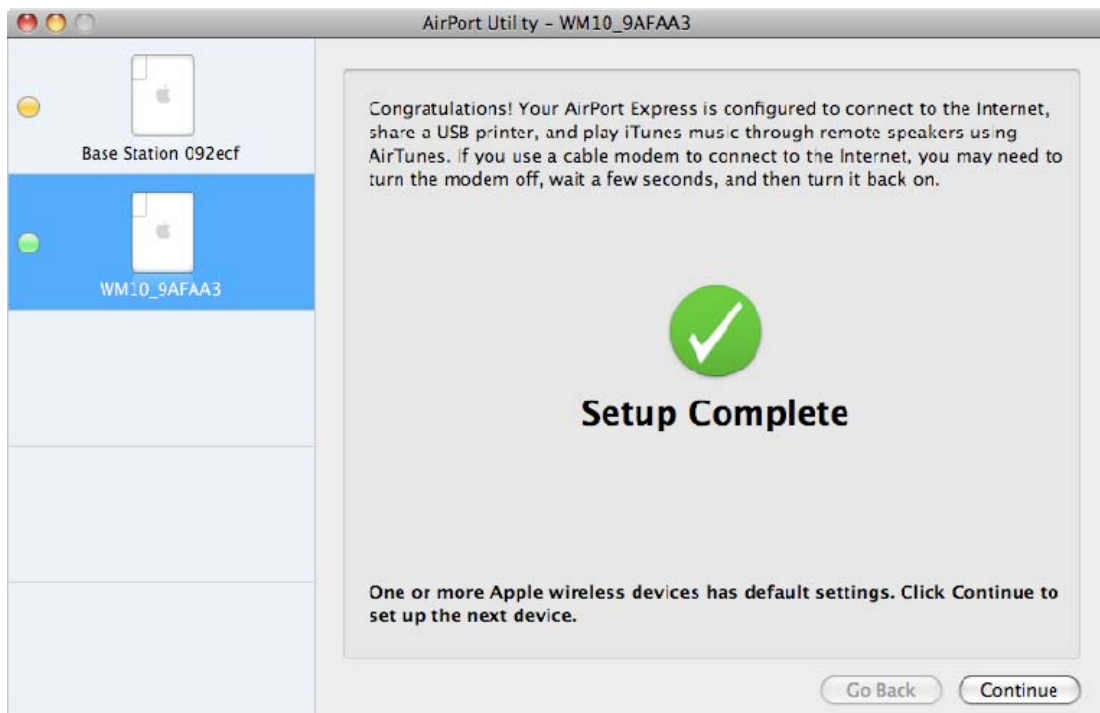
Please wait, the system will re-boot.

The message “Internet connection problem” may appear. Click « Continue », then « Ignore ».

A new window will be displayed just as before, click “Update”.



Please wait, the system will re-boot. The message “Setup Complete” should be displayed.



Close the Airport utility and try to connect to the network.



MICROMEGA